

Cedar Hill Cross Rd between Reynolds Rd and Blenkinsop Rd

November 22, 2020 To November 27, 2020



The data presented here is for information purposes only and should not be considered authoritative for construction, geotechnical, engineering, navigational, legal, or other site-specific uses. The information shared is owned by the Transportation Division of the Engineering Department at the District of Saanich. Accuracy is not guaranteed.

Start Date: 23-Nov-20
 Start Time: 20:00
 Station ID: C0012-02

Location 1: Cedar Hill Cross Rd between Reynolds Rd and Blenkinsop Rd

Note:

DATE:	November 23, 2020		November 24, 2020		November 25, 2020		November 26, 2020		November 27, 2020		WK AVG		WK AVG	HOURLY
	MON		TUE		WED		THURS		FRI		EB	WB	CH 1+2	%
Time:	EB	WB	EB	WB	EB	WB	EB	WB	EB	WB	EB	WB		
12-1 AM	25	14	23	16	22	23	15	21			21	19	40	0.4%
1-2 AM	13	11	8	6	16	10	16	9			13	9	22	0.2%
2-3 AM	5	13	9	11	13	12	6	7			8	11	19	0.2%
3-4 AM	3	4	5	2	4	5	2	6			4	4	8	0.1%
4-5 AM	12	11	9	8	13	9	8	11			11	10	20	0.2%
5-6 AM	35	32	33	30	31	36	37	32			34	33	67	0.7%
6-7 AM	154	80	159	100	148	99	163	96			156	94	250	2.5%
7-8 AM	358	203	356	208	387	204	376	215			369	208	577	5.8%
8-9 AM	443	369	503	407	480	385	496	392			481	388	869	8.7%
9-10 AM	391	222	417	266	345	233	408	271			390	248	638	6.4%
10-11 AM	350	258	381	269	364	247	394	261			372	259	631	6.3%
11-12 PM	404	318	422	283	428	284	425	296			420	295	715	7.1%
12-1 PM	420	308	424	343	416	280	437	331			424	316	740	7.4%
1-2 PM	442	306	399	331	404	309	404	340			412	322	734	7.3%
2-3 PM	481	371	478	357	438	399	478	397			469	381	850	8.5%
3-4 PM	472	443	448	472	526	437	514	469			490	455	945	9.4%
4-5 PM	479	374	467	325	500	364	505	348			488	353	841	8.4%
5-6 PM	371	264	382	305	391	308	401	294			386	293	679	6.8%
6-7 PM	234	222	205	185	219	198	259	236			229	210	440	4.4%
7-8 PM	191	148	212	142	212	159	183	153			200	151	350	3.5%
8-9 PM	116	107	138	109	124	104	142	132			130	113	243	2.4%
9-10 PM	91	68	83	74	96	80	108	73			95	74	168	1.7%
10-11 PM	61	39	60	48	62	51	71	62			64	50	114	1.1%
11-12 AM	39	31	37	26	42	40	32	43			38	35	73	0.7%
LANES	5590	4216	5658	4323	5681	4276	5880	4495			5702	4328	10030	100.0%
TOTAL	9806		9981		9957		10375				10030			
	MON		TUE		WED		THURS		FRI		WK AVG			

PEAK HOUR					TOTAL VEHICALS-PEAK PERIODS		2 HOUR PEAK INTERVALS					
MAX. 7 - 9 am PEAK HOUR	869	⇒	8.7%	between 8-9 AM	4420	⇒	6 HR TOTAL	2 HR AM (7 - 9 AM)				
MAX. 7 - 11 am PEAK HOUR	869	⇒	8.7%	between 8-9 AM	2965	⇒	4 HR TOTAL	VEH / HR	VEH / 2HR	2 HR %		
MAX. 11 am - 1 pm PEAK HOUR	740	⇒	7.4%	between 12-1 PM				7-8 AM	577	1446	14.4%	
MAX. 11 am - 3 pm PEAK HOUR	850	⇒	8.5%	between 2-3 PM				8-9 AM	869			
MAX. 4 - 6 pm PEAK HOUR	841	⇒	8.4%	between 4-5 PM				2 HR NOON (11 - 1 PM)				
MAX. 3 - 6 pm PEAK HOUR	945	⇒	9.4%	between 3-4 PM				VEH / HR	VEH / 2HR	2 HR %		
								11-12 PM	715	1455	14.5%	
								12-1 PM	740			
								2 HR PM (4 - 6 PM)				
								VEH / HR	VEH / 2HR	2 HR %		
								4-5 PM	841	1520	15.1%	
								5-6 PM	679			

Cedar Hill Cross Rd between Reynolds Rd and Blenkinsop Rd

Westbound

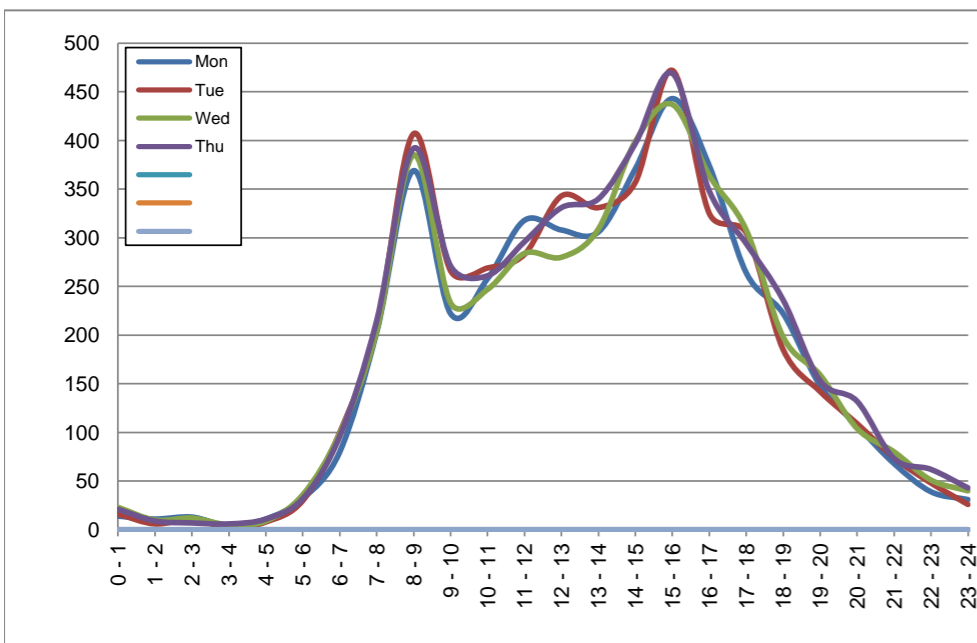
November 23, 2020 to November 26, 2020

Hourly Volumes

Time Period	Mon	Tue	Wed	Thu			
	Nov 23	Nov 24	Nov 25	Nov 26			
0 - 1	14	16	23	21			
1 - 2	11	6	10	9			
2 - 3	13	11	12	7			
3 - 4	4	2	5	6			
4 - 5	11	8	9	11			
5 - 6	32	30	36	32			
6 - 7	80	100	99	96			
7 - 8	203	208	204	215			
8 - 9	369	407	385	392			
9 - 10	222	266	233	271			
10 - 11	258	269	247	261			
11 - 12	318	283	284	296			
12 - 13	308	343	280	331			
13 - 14	306	331	309	340			
14 - 15	371	357	399	397			
15 - 16	443	472	437	469			
16 - 17	374	325	364	348			
17 - 18	264	305	308	294			
18 - 19	222	185	198	236			
19 - 20	148	142	159	153			
20 - 21	107	109	104	132			
21 - 22	68	74	80	73			
22 - 23	39	48	51	62			
23 - 24	31	26	40	43			
Day Total	4216	4323	4276	4495			

15-Minute Volumes

Time Start	Mon	Tue	Wed	Thu			
	Nov 23	Nov 24	Nov 25	Nov 26			
0:00	1	5	5	4			
0:15	5	3	7	6			
0:30	4	0	2	2			
0:45	4	8	9	9			
1:00	6	3	2	2			
1:15	3	1	4	3			
1:30	2	1	3	1			
1:45	0	1	1	3			
2:00	3	3	4	1			
2:15	7	3	5	4			
2:30	2	3	3	1			
2:45	1	2	0	1			
3:00	0	0	1	0			
3:15	0	1	0	3			
3:30	3	0	3	1			
3:45	1	1	1	2			
4:00	1	1	2	3			
4:15	2	3	3	3			
4:30	4	3	0	2			
4:45	4	1	4	3			
5:00	2	4	9	5			
5:15	6	3	7	9			
5:30	7	9	6	8			
5:45	17	14	14	10			
6:00	6	16	14	14			
6:15	16	18	16	15			
6:30	30	29	38	33			
6:45	28	37	31	34			
7:00	33	33	26	38			
7:15	43	47	44	48			
7:30	56	67	52	61			
7:45	71	61	82	68			
8:00	72	83	74	73			
8:15	91	93	88	101			
8:30	89	119	102	98			
8:45	117	112	121	120			
9:00	76	83	80	92			
9:15	49	54	54	49			
9:30	50	60	43	67			
9:45	47	69	56	63			
10:00	47	77	48	53			
10:15	61	68	64	74			
10:30	77	64	62	68			
10:45	73	60	73	66			
11:00	76	62	62	63			
11:15	75	67	66	72			
11:30	97	73	72	83			
11:45	70	81	84	78			
12:00	70	97	86	79			
12:15	76	68	67	76			
12:30	82	90	64	93			
12:45	80	88	63	83			
13:00	77	79	80	80			
13:15	93	76	72	86			
13:30	61	93	83	85			
13:45	75	83	74	89			
14:00	81	77	89	90			
14:15	78	85	80	71			
14:30	94	85	101	109			
14:45	118	110	129	127			
15:00	123	125	107	98			
15:15	119	113	99	135			
15:30	97	130	123	133			
15:45	104	104	108	103			
16:00	93	79	89	86			
16:15	91	102	101	105			
16:30	110	79	93	83			
16:45	80	65	81	74			
17:00	75	84	86	92			
17:15	72	85	94	76			
17:30	61	67	61	80			
17:45	56	69	67	46			
18:00	63	60	57	73			
18:15	64	55	51	56			
18:30	43	39	40	60			
18:45	52	31	50	47			
19:00	42	50	48	50			
19:15	46	37	39	35			
19:30	28	25	44	40			
19:45	32	30	28	28			
20:00	29	39	40	41			
20:15	29	27	30	38			
20:30	26	26	22	36			
20:45	23	17	12	17			
21:00	24	23	21	27			
21:15	16	21	23	15			
21:30	14	23	21	17			
21:45	14	7	15	14			
22:00	13	13	12	22			
22:15	8	13	10	15			
22:30	9	12	15	16			
22:45	9	10	14	9			
23:00	13	10	13	21			
23:15	7	5	10	8			
23:30	5	5	8	8			
23:45	6	6	9	6			



Site notes:

Cedar Hill Cross Rd between Reynolds Rd and Blenkinsop Rd

Eastbound

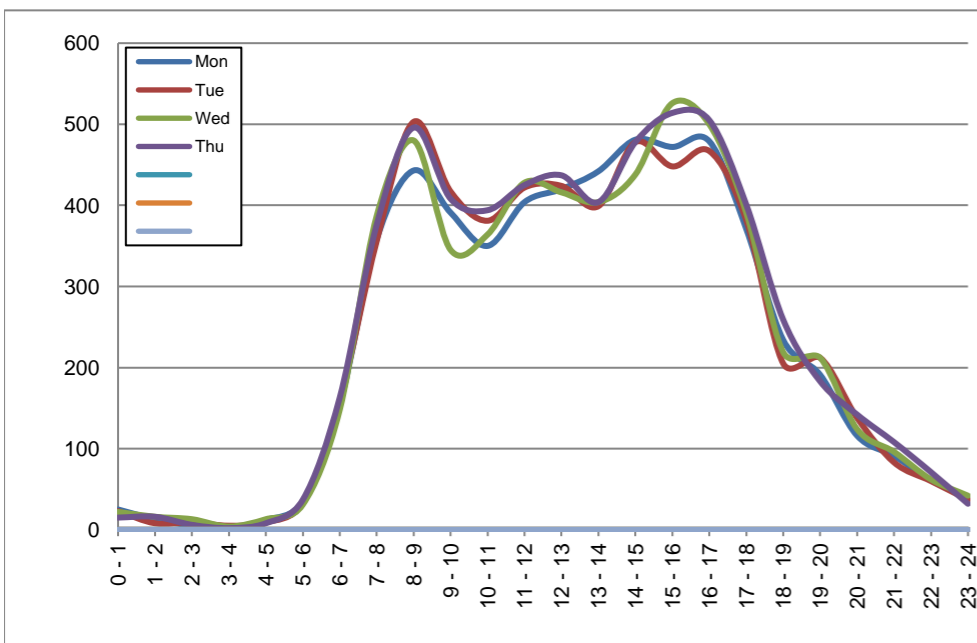
November 23, 2020 to November 26, 2020

Hourly Volumes

Time Period	Mon	Tue	Wed	Thu			
	Nov 23	Nov 24	Nov 25	Nov 26			
0 - 1	25	23	22	15			
1 - 2	13	8	16	16			
2 - 3	5	9	13	6			
3 - 4	3	5	4	2			
4 - 5	12	9	13	8			
5 - 6	35	33	31	37			
6 - 7	154	159	148	163			
7 - 8	358	356	387	376			
8 - 9	443	503	480	496			
9 - 10	391	417	345	408			
10 - 11	350	381	364	394			
11 - 12	404	422	428	425			
12 - 13	420	424	416	437			
13 - 14	442	399	404	404			
14 - 15	481	478	438	478			
15 - 16	472	448	526	514			
16 - 17	479	467	500	505			
17 - 18	371	382	391	401			
18 - 19	234	205	219	259			
19 - 20	191	212	212	183			
20 - 21	116	138	124	142			
21 - 22	91	83	96	108			
22 - 23	61	60	62	71			
23 - 24	39	37	42	32			
Day Total	5590	5658	5681	5880			

15-Minute Volumes

Time Start	Mon	Tue	Wed	Thu				Time Start	Mon	Tue	Wed	Thu			
	Nov 23	Nov 24	Nov 25	Nov 26					Nov 23	Nov 24	Nov 25	Nov 26			
0:00	9	4	8	4				12:00	93	101	93	108			
0:15	6	6	6	5				12:15	100	102	92	110			
0:30	5	6	4	5				12:30	108	125	125	100			
0:45	5	7	4	1				12:45	119	96	106	119			
1:00	6	2	4	5				13:00	103	107	103	113			
1:15	5	1	5	6				13:15	117	94	99	92			
1:30	1	4	3	2				13:30	117	90	108	101			
1:45	1	1	4	3				13:45	105	108	94	98			
2:00	1	0	4	1				14:00	110	111	97	133			
2:15	2	4	5	1				14:15	128	136	105	114			
2:30	2	2	3	2				14:30	122	121	112	125			
2:45	0	3	1	2				14:45	121	110	124	106			
3:00	0	1	1	0				15:00	123	122	131	120			
3:15	0	1	1	0				15:15	123	119	140	134			
3:30	1	3	2	1				15:30	120	90	117	125			
3:45	2	0	0	1				15:45	106	117	138	135			
4:00	1	1	1	2				16:00	124	130	104	137			
4:15	2	1	4	1				16:15	111	127	129	120			
4:30	3	4	2	2				16:30	112	108	126	140			
4:45	6	3	6	3				16:45	132	102	141	108			
5:00	1	3	2	3				17:00	131	117	116	112			
5:15	6	7	5	7				17:15	92	104	108	118			
5:30	10	7	11	15				17:30	86	86	94	90			
5:45	18	16	13	12				17:45	62	75	73	81			
6:00	15	21	22	16				18:00	57	49	55	63			
6:15	28	43	32	33				18:15	61	71	62	72			
6:30	50	34	34	41				18:30	54	39	58	61			
6:45	61	61	60	73				18:45	62	46	44	63			
7:00	60	67	66	57				19:00	58	57	63	44			
7:15	75	82	97	88				19:15	37	63	61	52			
7:30	113	99	113	101				19:30	43	46	40	46			
7:45	110	108	111	130				19:45	53	46	48	41			
8:00	101	114	116	114				20:00	29	43	30	36			
8:15	133	121	129	125				20:15	22	43	29	42			
8:30	100	127	124	122				20:30	32	16	34	35			
8:45	109	141	111	135				20:45	33	36	31	29			
9:00	104	115	95	119				21:00	34	25	25	21			
9:15	89	112	90	82				21:15	23	23	28	40			
9:30	102	103	76	90				21:30	18	20	20	29			
9:45	96	87	84	117				21:45	16	15	23	18			
10:00	99	90	79	96				22:00	12	11	25	24			
10:15	88	102	85	114				22:15	17	20	14	15			
10:30	74	99	100	100				22:30	11	15	10	14			
10:45	89	90	100	84				22:45	21	14	13	18			
11:00	105	113	94	94				23:00	8	10	17	12			
11:15	107	79	116	104				23:15	11	13	11	11			
11:30	87	111	109	118				23:30	8	8	3	5			
11:45	105	119	109	109				23:45	12	6	11	4			



Site notes:

Vehicle Speed Summary

Saanich Engineering Department

Count Id: C0012-02

Filename: Cedar Hill Cross Rd between Reynolds Rd and Blenkinsop Rd-Nov-2020.xlsm

Location: Cedar Hill Cross Rd between Reynolds Rd and Blenkinsop Rd

Note:

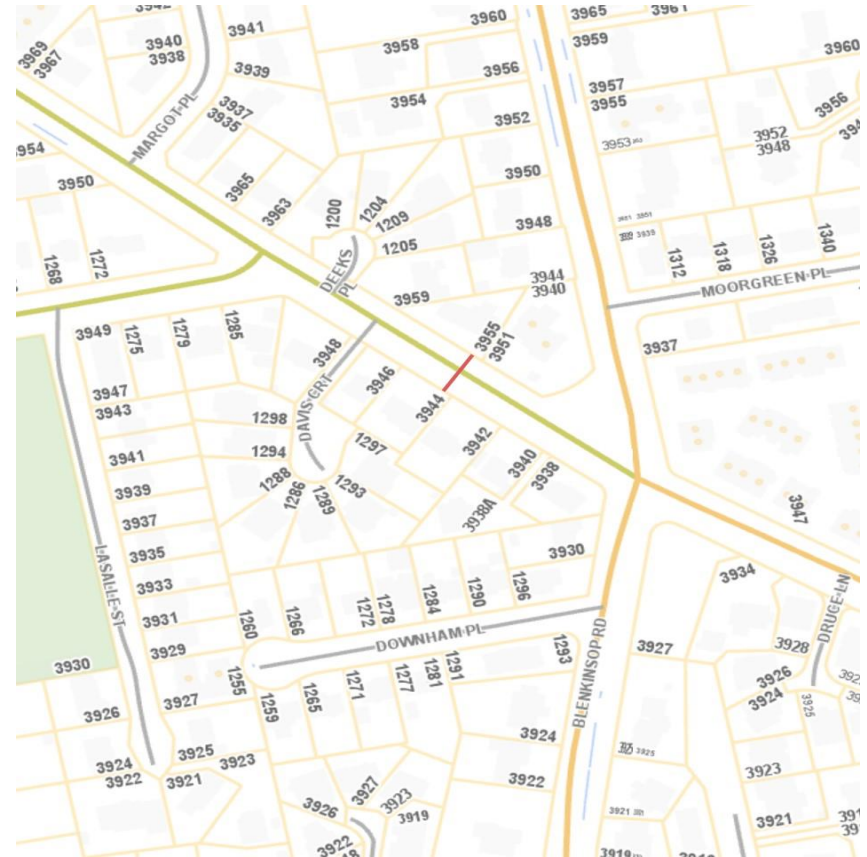
Direction: **East-West**

Dates: **November 22, 2020 To November 27, 2020**

Filtered data

AVG. SPEED	27 mph	43 km/h
50 % SPEED	27 mph	44 km/h
85 % SPEED	32 mph	51 km/h
95 % SPEED	35 mph	56 km/h

Location Map



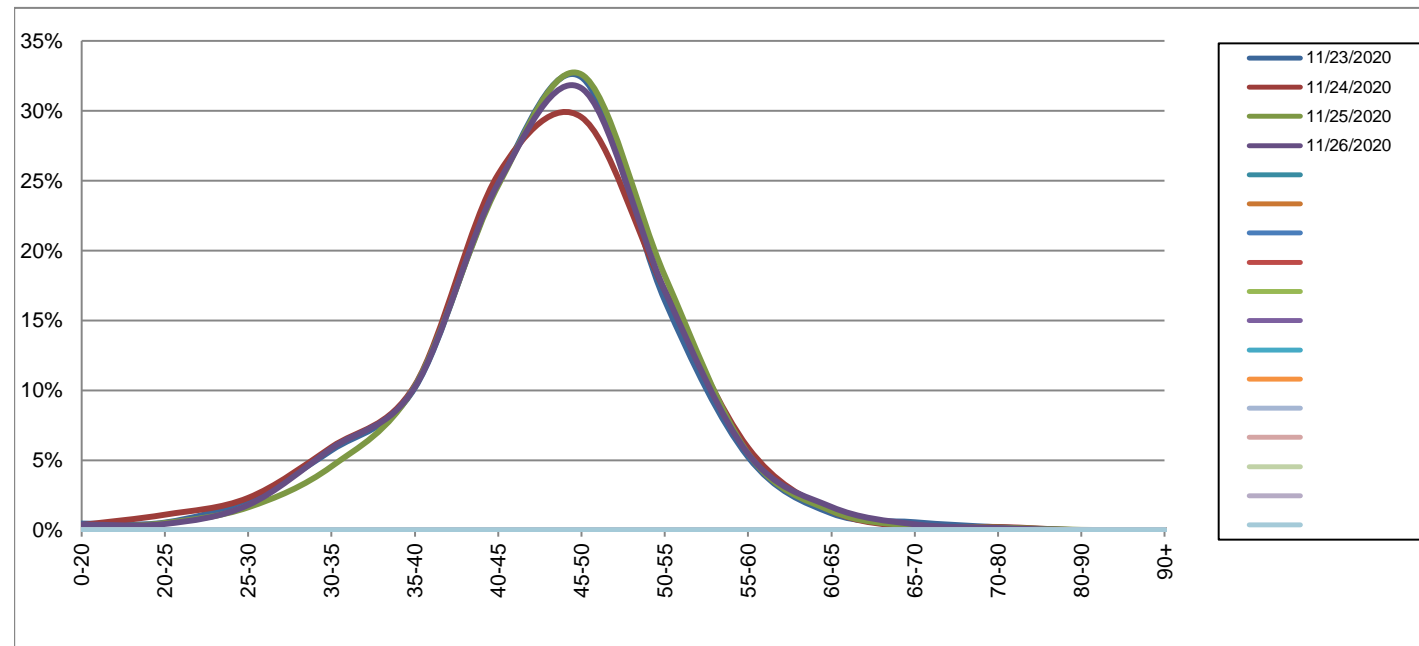
Cedar Hill Cross Rd between Reynolds Rd and Blenkinsop Rd

Westbound
November 23, 2020 to November 26, 2020

Daily Speed Bin Percentages															Daily Speed Bin Volumes														Total	Avg.
Bin #	1	2	3	4	5	6	7	8	9	10	11	12	13	14	1	2	3	4	5	6	7	8	9	10	11	12	13	14	Volume	Speed
Bin Speeds	0-20	20-25	25-30	30-35	35-40	40-45	45-50	50-55	55-60	60-65	65-70	70-80	80-90	90+	0-20	20-25	25-30	30-35	35-40	40-45	45-50	50-55	55-60	60-65	65-70	70-80	80-90	90+		
11/23/2020	0.5%	0.5%	2.2%	5.7%	10.2%	24.8%	32.4%	16.4%	5.2%	1.2%	0.6%	0.2%	0.0%	0.0%	20	23	93	241	429	1046	1366	693	221	51	24	9	0	0	4216	45
11/24/2020	0.4%	1.1%	2.3%	5.9%	10.4%	25.4%	29.5%	17.2%	5.9%	1.4%	0.2%	0.2%	0.0%	0.0%	16	48	100	257	448	1100	1277	742	255	60	10	10	0	0	4323	45
11/25/2020	0.2%	0.5%	1.6%	4.6%	10.3%	24.6%	32.6%	18.2%	5.5%	1.4%	0.3%	0.2%	0.0%	0.0%	7	22	70	195	440	1054	1394	778	235	59	13	8	1	0	4276	46
11/26/2020	0.4%	0.4%	1.8%	5.9%	10.2%	24.8%	31.6%	17.1%	5.5%	1.7%	0.4%	0.2%	0.0%	0.0%	18	20	81	263	460	1115	1421	770	246	75	19	7	0	0	4495	46
Total	0.4%	0.7%	2.0%	5.5%	10.3%	24.9%	31.5%	17.2%	5.5%	1.4%	0.4%	0.2%	0.0%	0.0%	61	113	344	956	1777	4315	5458	2983	957	245	66	34	1	0	17310	45

Speed Data Summary

Bin #	1	2	3	4	5	6	7	8	9	10	11	12	13	14	Total
Bin Speeds	0-20	20-25	25-30	30-35	35-40	40-45	45-50	50-55	55-60	60-65	65-70	70-80	80-90	90+	
Survey Total	61	113	344	956	1777	4315	5458	2983	957	245	66	34	1	0	17310
% Total	0.4%	0.7%	2.0%	5.5%	10.3%	24.9%	31.5%	17.2%	5.5%	1.4%	0.4%	0.2%	0.0%	0.0%	100%
Accumulated %	0.4%	1.0%	3.0%	8.5%	18.8%	43.7%	75.2%	92.5%	98.0%	99.4%	99.8%	100.0%	100.0%	100%	
Inverse Accum. %	99.6%	99.0%	97.0%	91.5%	81.2%	56.3%	24.8%	7.5%	2.0%	0.6%	0.2%	0.0%	0.0%	0.0%	
Average Speed	45 KM/H														



Site notes:

Cedar Hill Cross Rd between Reynolds Rd and Blenkinsop Rd

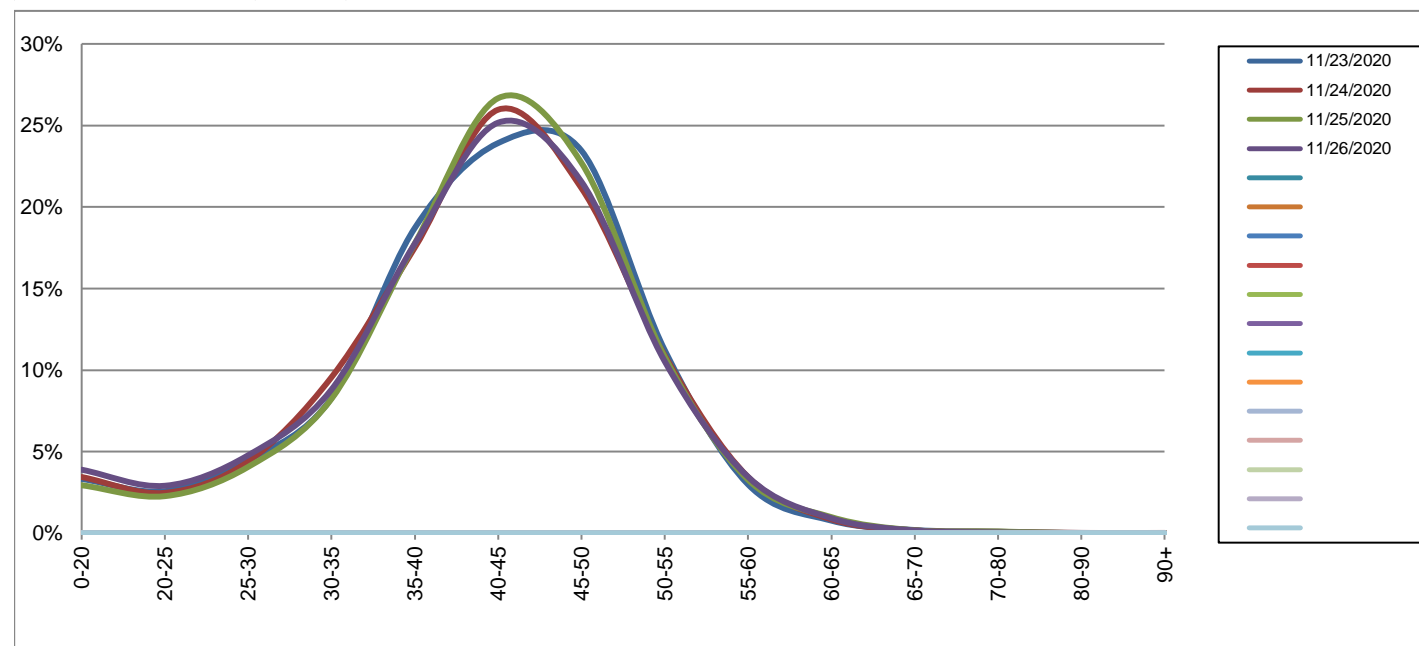
Eastbound

November 23, 2020 to November 26, 2020

Daily Speed Bin Percentages															Daily Speed Bin Volumes														Total	Avg. Speed
Bin #	1	2	3	4	5	6	7	8	9	10	11	12	13	14	1	2	3	4	5	6	7	8	9	10	11	12	13	14		
Bin Speeds	0-20	20-25	25-30	30-35	35-40	40-45	45-50	50-55	55-60	60-65	65-70	70-80	80-90	90+	0-20	20-25	25-30	30-35	35-40	40-45	45-50	50-55	55-60	60-65	65-70	70-80	80-90	90+	Volume	Speed
11/23/2020	3.3%	2.6%	4.5%	8.3%	18.7%	23.9%	23.5%	11.2%	3.0%	0.8%	0.2%	0.1%	0.0%	0.0%	186	144	250	463	1046	1337	1311	627	167	43	11	5	0	0	5590	41
11/24/2020	3.4%	2.5%	4.4%	9.6%	17.5%	26.0%	21.2%	10.9%	3.4%	0.8%	0.2%	0.1%	0.0%	0.0%	195	140	249	541	991	1469	1197	616	195	48	10	5	1	1	5658	41
11/25/2020	2.9%	2.3%	4.1%	8.2%	17.8%	26.7%	22.7%	10.8%	3.3%	1.0%	0.2%	0.1%	0.0%	0.0%	167	129	231	468	1009	1515	1290	614	186	56	10	6	0	0	5681	42
11/26/2020	3.9%	2.9%	4.8%	8.8%	17.8%	25.2%	21.5%	10.5%	3.5%	0.9%	0.2%	0.1%	0.0%	0.0%	229	171	281	518	1044	1480	1267	619	203	54	10	3	1	0	5880	41
Total	3.4%	2.6%	4.4%	8.7%	17.9%	25.4%	22.2%	10.9%	3.3%	0.9%	0.2%	0.1%	0.0%	0.0%	777	584	1011	1990	4090	5801	5065	2476	751	201	41	19	2	1	22809	41

Speed Data Summary

Bin #	1	2	3	4	5	6	7	8	9	10	11	12	13	14	Total
Bin Speeds	0-20	20-25	25-30	30-35	35-40	40-45	45-50	50-55	55-60	60-65	65-70	70-80	80-90	90+	
Survey Total	777	584	1011	1990	4090	5801	5065	2476	751	201	41	19	2	22809	
% Total	3.4%	2.6%	4.4%	8.7%	17.9%	25.4%	22.2%	10.9%	3.3%	0.9%	0.2%	0.1%	0.0%	0.0%	100%
Accumulated %	3.4%	6.0%	10.4%	19.1%	37.1%	62.5%	84.7%	95.6%	98.8%	99.7%	99.9%	100.0%	100.0%	100%	
Inverse Accum. %	96.6%	94.0%	89.6%	80.9%	62.9%	37.5%	15.3%	4.4%	1.2%	0.3%	0.1%	0.0%	0.0%	0.0%	
Average Speed	41 KM/H														



Site notes:

Cedar Hill Cross Rd between Reynolds Rd and Blenkinsop Rd

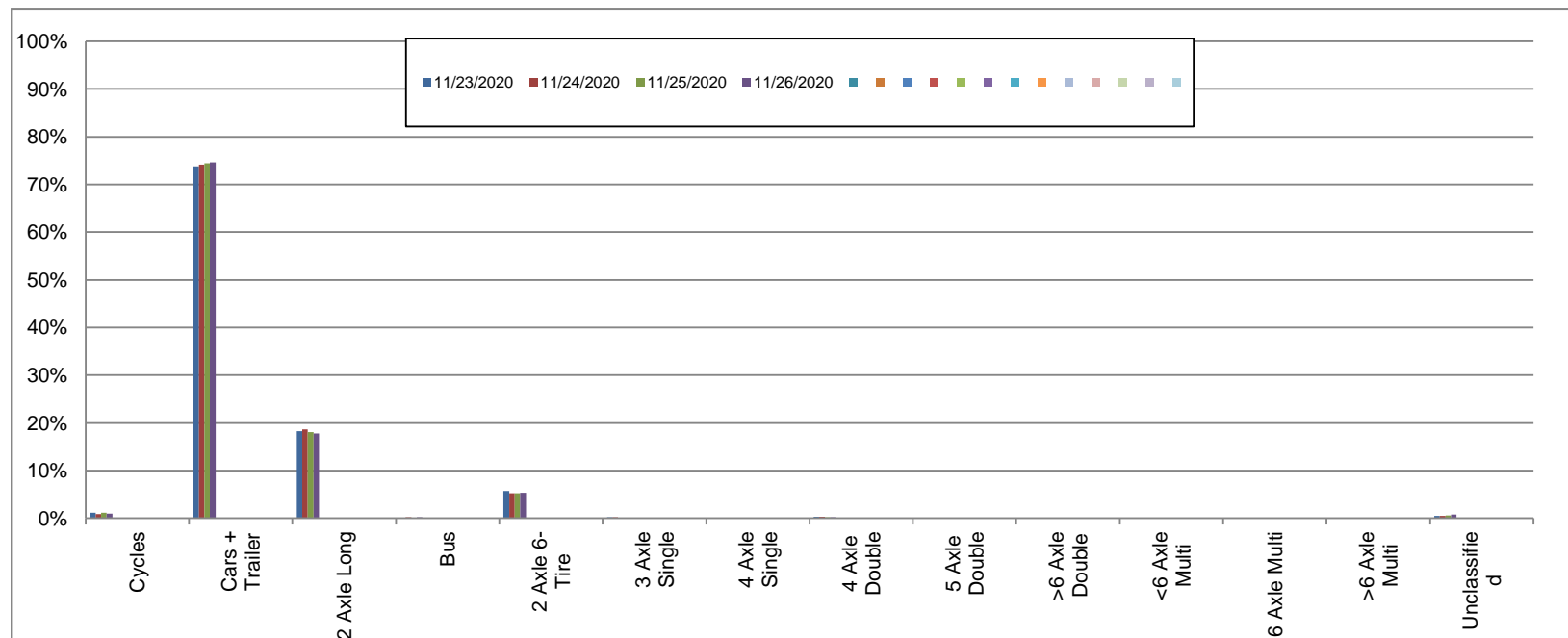
Westbound

November 23, 2020 to November 26, 2020

Daily Class Bin Percentages															Daily Class Bin Volumes											Total Volume			
Bin #	1	2	3	4	5	6	7	8	9	10	11	12	13	14	1	2	3	4	5	6	7	8	9	10	11		12	13	14
Bin Class	Cycles	Cars + Trailer	2 Axle Long	Bus	2 Axle 6-Tire	3 Axle Single	4 Axle Single	4 Axle Double	5 Axle Double	>6 Axle Double	<6 Axle Multi	6 Axle Multi	>6 Axle Multi	Unclassified	Cycles	Cars + Trailer	2 Axle Long	Bus	2 Axle 6-Tire	3 Axle Single	4 Axle Single	4 Axle Double	5 Axle Double	>6 Axle Double	<6 Axle Multi	6 Axle Multi	>6 Axle Multi	Unclassified	
11/23/2020	1.2%	73.6%	18.3%	0.1%	5.7%	0.2%	0.0%	0.3%	0.0%	0.0%	0.0%	0.0%	0.0%	0.5%	49	3105	771	6	242	8	0	12	1	0	0	0	0	22	4216
11/24/2020	0.9%	74.2%	18.6%	0.2%	5.2%	0.2%	0.0%	0.3%	0.0%	0.0%	0.0%	0.0%	0.0%	0.5%	38	3206	805	8	226	8	0	12	0	0	0	0	0	20	4323
11/25/2020	1.1%	74.5%	18.0%	0.1%	5.3%	0.1%	0.0%	0.2%	0.0%	0.0%	0.0%	0.0%	0.0%	0.6%	48	3185	771	6	225	6	0	10	1	0	0	0	0	24	4276
11/26/2020	0.9%	74.6%	17.7%	0.2%	5.3%	0.2%	0.0%	0.2%	0.0%	0.0%	0.0%	0.0%	0.0%	0.8%	42	3355	797	11	239	7	0	9	1	0	0	0	0	34	4495
Total	1.0%	74.2%	18.2%	0.2%	5.4%	0.2%	0.0%	0.2%	0.0%	0.0%	0.0%	0.0%	0.0%	0.6%	177	12851	3144	31	932	29	0	43	3	0	0	0	0	100	17310

Class Data Summary

Bin #	1	2	3	4	5	6	7	8	9	10	11	12	13	14	Total Volume
Bin Class	Cycles	Cars + Trailer	2 Axle Long	Bus	2 Axle 6-Tire	3 Axle Single	4 Axle Single	4 Axle Double	5 Axle Double	>6 Axle Double	<6 Axle Multi	6 Axle Multi	>6 Axle Multi	Unclassified	Total Volume
Survey Total	177	12851	3144	31	932	29	0	43	3	0	0	0	0	100	17310
% Total	1.0%	74.2%	18.2%	0.2%	5.4%	0.2%	0.0%	0.2%	0.0%	0.0%	0.0%	0.0%	0.0%	0.6%	100%
Accumulated %	1.0%	75.3%	93.4%	93.6%	99.0%	99.2%	99.2%	99.4%	99.4%	99.4%	99.4%	99.4%	99.4%	100.0%	
Inv. Accum. %	99.0%	24.7%	6.6%	6.4%	1.0%	0.8%	0.8%	0.6%	0.6%	0.6%	0.6%	0.6%	0.6%	0.0%	



Classification Descriptions

Bin #	Bin Description
1	Motorcycles
2	Passenger cars, including those with recreational trailers
3	2-axle pick-ups, vans, and RVs, including those with recreational trailers
4	Buses
5	2-axle, 6-tire single units
6	3-axle single units
7	4-axle single units
8	3-axle or 4-axle double unit
9	5-axle double unit
10	6-, 7-, or 8-axle double unit
11	5-axle multiple unit
12	6-axle multiple unit
13	7-or-more-axle multiple unit
14	Vehicles that could not be classified

Site notes:

Cedar Hill Cross Rd between Reynolds Rd and Blenkinsop Rd

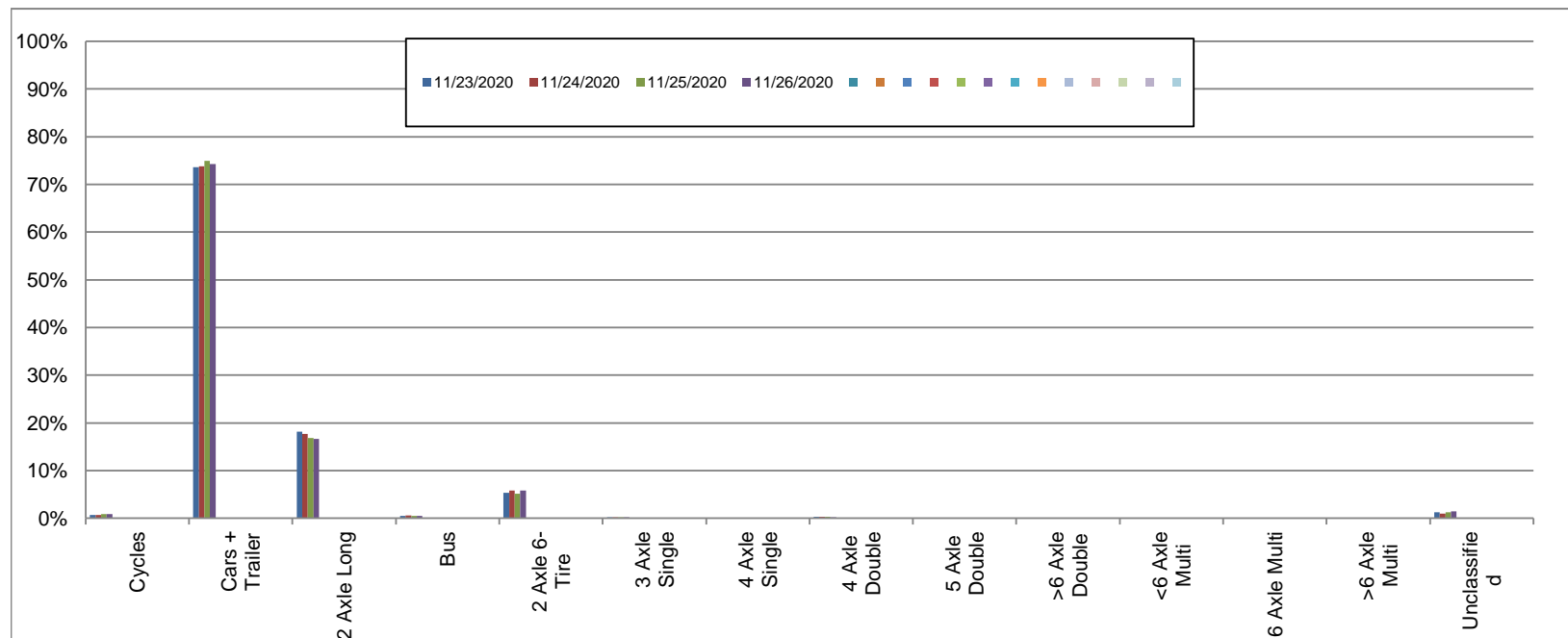
Eastbound

November 23, 2020 to November 26, 2020

Daily Class Bin Percentages															Daily Class Bin Volumes															
Bin #	1	2	3	4	5	6	7	8	9	10	11	12	13	14	1	2	3	4	5	6	7	8	9	10	11	12	13	14	Total Volume	
Bin Class	Cycles	Cars + Trailer	2 Axle Long	Bus	2 Axle 6-Tire	3 Axle Single	4 Axle Single	4 Axle Double	5 Axle Double	>6 Axle Double	<6 Axle Multi	6 Axle Multi	>6 Axle Multi	Unclassified	Cycles	Cars + Trailer	2 Axle Long	Bus	2 Axle 6-Tire	3 Axle Single	4 Axle Single	4 Axle Double	5 Axle Double	>6 Axle Double	<6 Axle Multi	6 Axle Multi	>6 Axle Multi	Unclassified		
11/23/2020	0.7%	73.6%	18.2%	0.5%	5.3%	0.2%	0.0%	0.3%	0.0%	0.0%	0.0%	0.0%	0.0%	1.2%	37	4113	1016	28	298	13	0	16	0	0	0	0	0	0	69	5590
11/24/2020	0.7%	73.8%	17.6%	0.5%	5.9%	0.2%	0.0%	0.3%	0.0%	0.0%	0.0%	0.0%	0.0%	1.0%	39	4176	998	31	331	9	0	18	1	0	0	1	0	0	54	5658
11/25/2020	0.8%	74.9%	16.8%	0.5%	5.2%	0.2%	0.0%	0.3%	0.0%	0.1%	0.0%	0.0%	0.0%	1.2%	48	4256	957	28	293	9	0	15	0	4	0	0	0	0	71	5681
11/26/2020	0.9%	74.3%	16.6%	0.5%	5.8%	0.2%	0.0%	0.2%	0.0%	0.0%	0.0%	0.0%	0.0%	1.5%	50	4368	978	30	339	13	2	14	0	0	0	0	0	0	86	5880
Total	0.8%	74.2%	17.3%	0.5%	5.5%	0.2%	0.0%	0.3%	0.0%	0.0%	0.0%	0.0%	0.0%	1.2%	174	16913	3949	117	1261	44	2	63	1	4	0	1	0	280	22809	

Class Data Summary

Bin #	1	2	3	4	5	6	7	8	9	10	11	12	13	14	Total Volume
Bin Class	Cycles	Cars + Trailer	2 Axle Long	Bus	2 Axle 6-Tire	3 Axle Single	4 Axle Single	4 Axle Double	5 Axle Double	>6 Axle Double	<6 Axle Multi	6 Axle Multi	>6 Axle Multi	Unclassified	Total Volume
Survey Total	174	16913	3949	117	1261	44	2	63	1	4	0	1	0	280	22809
% Total	0.8%	74.2%	17.3%	0.5%	5.5%	0.2%	0.0%	0.3%	0.0%	0.0%	0.0%	0.0%	0.0%	1.2%	100%
Accumulated %	0.8%	74.9%	92.2%	92.7%	98.3%	98.5%	98.5%	98.7%	98.8%	98.8%	98.8%	98.8%	98.8%	100.0%	
Inv. Accum. %	99.2%	25.1%	7.8%	7.3%	1.7%	1.5%	1.5%	1.3%	1.2%	1.2%	1.2%	1.2%	1.2%	0.0%	



Classification Descriptions

Bin #	Bin Description
1	Motorcycles
2	Passenger cars, including those with recreational trailers
3	2-axle pick-ups, vans, and RVs, including those with recreational trailers
4	Buses
5	2-axle, 6-tire single units
6	3-axle single units
7	4-axle single units
8	3-axle or 4-axle double unit
9	5-axle double unit
10	6-, 7-, or 8-axle double unit
11	5-axle multiple unit
12	6-axle multiple unit
13	7-or-more-axle multiple unit
14	Vehicles that could not be classified

Site notes: